

Sigma Telescopic Platform



PRODUCT DATA SHEET

Z20E

The Z20E is CTE's largest selling machine, featuring the renowned sigma/2-stage-telescopic boom configuration that enables maximum outreach from 2m upwards. Working vertically or horizontally or in any combination is easy with the Z20E. Offering 20m working height and upto 9.5m up & over outreach with zero tailswing, the Z20E is the most versatile platform in its class.

Operating Dimensions

- Working Height 19.8m
- Platform Height 17.8m
- Safe Working Load 200kg
- Working Outreach 9.5m
- Zero Tailswing
- Mounted on 3.5tonne GVW chassis

The Z20E shares the proven 'Z' control system and features: simple proportional controls, basket load sensing, load sensitive outrigger interlocks and zero tailswing.

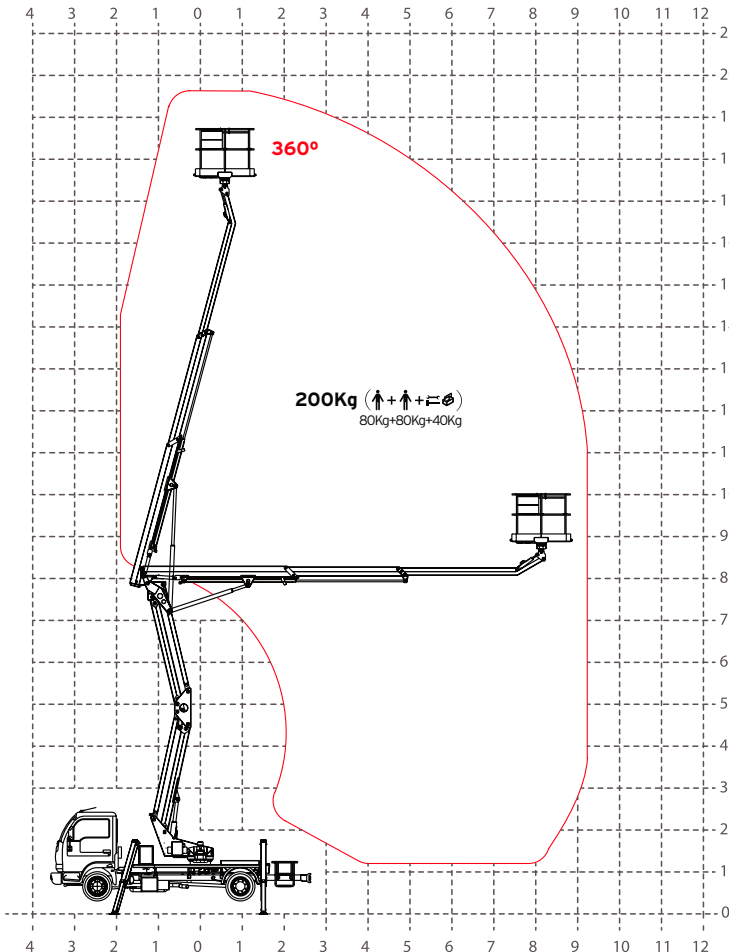
The Z20E is supplied mounted and full fitted as standard to a Nissan Cabstar 3.5 tonne chassis cab (other chassis are available on request). This includes vehicle PTO, cab-mounted display for PTO hour clock and outrigger status, full aluminium decking and access steps to basket.





Z20E

Sigma Telescopic Platform



Specifications

Operating Dimensions

Working Height	19.8m
Platform Height	17.8m
Outreach from Centre	9.5m
Outrigger Footprint	

(WxL) 2.8m x 3.5m

Rotation 360° Continuous

Basket

Rotation	80° + 80°
Safe Working Load	200Kg
Dimensions	1.4m x 0.7m x 1.1m (H)

Closed Dimensions

Length	6.51m
Width (Nissan)	2.30m
Height	2.90m
GVW	3500Kg
Kerb Weight (Nissan TL-35-10)	3280Kg

Safety Features

- Pressure sensitive outrigger interlocks c/w LED display
- Fail safe hydraulic circuit with check valves on all cylinders
- Automatic Basket overload sensing c/w alarm, Indicator and cut out
- Zero Tailswing (does not project outside outrigger width)
- Full manual override for all functions (12v DC Optional)
- CE marked & meets or exceeds UK & European safety legislation

Technical Features

- Steel Chassis subframe and boom superstructure
- 4 No. 'A'-shape hydraulic outriggers
- Aluminium checker plate decking with 150 mm tool tray walls
- Basket made of structural grade aluminium tube, dimensions mm 1400 x 700 x 1100
- Two stage Sigma + 2 stage telescopic top boom
- Continuous 360° turret rotation on turntable roller bearing
- Smooth, proportional electro-hydraulic controls at ground and basket
- Vehicle motor start and stop functions from basket and ground
- Hydraulic basket rotation 80° right + 80° left
- Hydraulic parallelogram system for basket levelling function
- Hydraulic system powered by vehicle power take off.
- Warning beeper horn when power takeoff is on
- Flashing beacon mounted to cab roof
- 110v AC outlet in basket
- PTO Hour-meter & Outrigger function display in the cab
- Standard colours RAL colour blue 5017 and white

Can be mounted on 3.5tonne GVW chassis and upwards. Nissan Cabstar is standard, can be mounted on Iveco, Mercedes, Renault. Please ask for further details.

